

## Prosperity Catalyst – Haiti Beekeeping and Agroforestry Project – Progress Report as of September 30, 2023

### Summary of Progress to Date:

#### *Building the Capacity of the Beekeeping Groups and Associations*

At this stage, all three new Associations have elected a majority female leadership committee, filed their paperwork to become legally registered and have identified and signed a three-year lease agreement for a property that will serve as their aggregation site where the beekeepers in the region will collect agricultural products and seeds for storage, transformation and sale. The site will also be used to sell beekeeping and other farm tools, equipment and inputs. These locations will be used by the beekeepers for regional training activities and membership meetings.



Each of the three new sites has received basic furniture and equipment required to become operational. Solar panels and batteries are on the way soon to give these sites electricity to facilitate work and to attract community members to come to the site to charge their phones and buy and sell their products. With help from the Fanm Limye mentors and agricultural team, each association is developing a business plan to lay out their vision for how they will generate revenue to continue to rent the site after the three-year lease is up and to finance any management and operational costs. The business plans will identify the remaining equipment each site will purchase with project funds to contribute to their sustainability plans. Two sites are currently looking at purchasing corn grinders and cold press equipment.



#### *Beekeeping Training Replications*

All those beekeepers who attended the Training of Trainers (TOT) in agroforestry and advanced beekeeping skills are back in their communities, sharing what they have learned. So far, 40 of the trainees have set up their farms as demonstration sites to test and show other members of their beekeeping groups the agroforestry techniques they learned at the TOT. There is at least one demonstration site in each of the 32 beekeeping communities. The techniques being demonstrated include contour farming, inter-cropping, natural pest management, live fencing, and home gardens. To prepare for the distribution of plants and trees to be planted on

beekeepers' farms, the demonstration sites along with existing nurseries have planted 60,000 seedlings, 25,000 of which have already been distributed to the beekeepers. Another 25,000 should be ready for distribution in October. The most popular technique being replicated on beekeeper farms are home gardens and live fencing, which require many trees. Our hope is that with ongoing TA from our agricultural extension team, 80% of the transplanted seedlings will survive.

So far, 95% of the beekeepers have adopted one or more agroforestry techniques on the farms, 85% two techniques, and 75% three. The beekeepers who adopt 3 or more agroforestry techniques will qualify for donated bee hives, as will those beekeepers who are using their farms as agroforestry demonstration sites.

### ***Hive Construction***

One of the goals of this project is to ensure that every beekeeper trained by PCat and interested in practicing beekeeping has at least one hive. For this reason, we plan to construct 808 double-decker hives. Over the last few months, we purchased the wood and other supplies required to build the boxes and imported 10 boxes from the US to serve as the models to be copied by the women trained to build the boxes. To date, 120 hives have been constructed by the trainers who are local carpenters based in the beekeeping communes and 32 women have signed up to receive training in hive construction, adding to the 36 women (22 in Nippes and 14 in Petit Goave), already trained during past years. Once fully operational, the hive construction team should be able to produce 200 double decker hives per month.

In parallel, we have contracted with beekeepers who specialize in growing queens and colonies. So far, we have purchased 350 colonies, which will be delivered once the hives are ready to house them. Given the high cost of purchasing colonies, \$100 per colony, we are hoping to have our staff and some of the beekeepers trained in growing queens and splitting colonies. It is a lucrative business and will also cut the costs of expanding the size of the beekeepers' apiaries.

### **Challenges Encountered and Solutions:**

The poor security situation in Haiti continues to influence the way our staff and beneficiaries operate. Travel requires careful planning. Our Port-au-Prince-based staff fly from Port-au-Prince to cities in the North or South and then take buses or motorcycles from there to our project sites. Our staff and beneficiaries report that there are many people moving into the rural areas from Port-au-Prince in search of greater security.

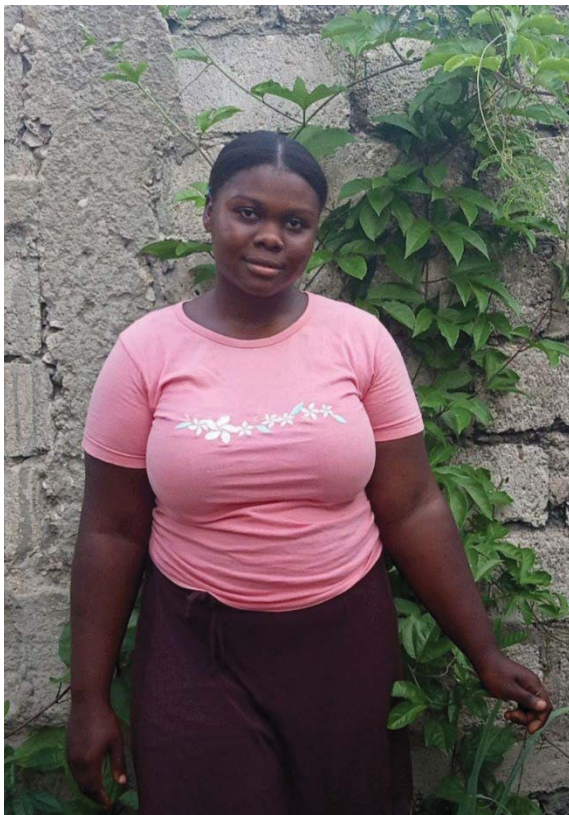


The UN estimates that 40% of the population is experiencing hunger. Honey is a great nutritional supplement for beekeepers and may also have a market among agencies working to respond to the growing levels of malnutrition.

### **Next Steps:**

1. Associations complete business plans and Fanm Limye makes further investments in aggregations sites based upon priorities identified in the business plans.
2. Distribute at least 25,000 more seedlings and provide regular farm visits to track survival.
3. Track adoption of agroforestry practices among beekeepers.
4. Train 32 new women in hive construction and produce at least 600 additional double-decker boxes over the next quarter.
5. Procure additional bee colonies and strengthen staff and beekeeper skills in queen rearing and colony splitting.
6. Distribute hives with colonies to the beekeepers who are practicing 3 or more agroforestry techniques on their farms.
7. Provide on-farm TA to beekeepers in setting up and tending their apiaries and track honey and wax production and sale.
8. Over the next quarter, Fanm Limye will launch a new Maternal Child Health and Nutrition program serving the beekeeping communities. We have contacted local organizations with experience delivering training of trainers in these areas and will contract with one of them to train two women from each beekeeping group.

### ***Beneficiary Story***



“My name is Guerrier Sarepta; I am 19 years old and a member of a beekeeping group created with PCat support in Arcahaie. As a young person, I am fascinated by the type of training and services that PCAT provides to our groups. PCAT is offering great leadership opportunities to many women in my community, which inspires me to invest more of myself into the program to ensure its success.

I have received extensive training in apiculture, nursery management, and especially in agroforestry. Thanks to these trainings, young girls like me have the tools and knowledge needed to enter the local market, engage in commerce, and increase our income.

For this reason, I have spoken with a few young people who are interested in agriculture to work together and pursue a collective approach to agriculture and apiculture. We plan to utilize the resources we have, including the agroforestry

techniques I learned during the training, to produce marketable and high-quality agricultural products.

Additionally, we understand the importance of protecting our environment and natural resources, particularly bees. We have the knowledge to protect our surroundings and contribute to the well-being of our community.

I want to use my voice to express gratitude on behalf of all the women who have benefited from your assistance. We firmly believe that PCAT/Fanm Limyè is the guiding light that leads young women in Haiti to success.

Thank you.”

### ***Summary of Revenue and Expenses during FY24***

Prosperity Catalyst received commitments for a total of \$531,050 towards this project, of which it has received \$496,472 or 93% and anticipates receiving the remaining 7% in the coming months.

Spending for the period October, 2022 through September 2023 totaled \$344,042 or 68% of the planned FY23 budget. Given the security situation, spending on travel was below expected and purchases of the inputs for the hives was slower than expected given the challenges of acquiring and transporting the needed wood. We have overcome the challenges of purchasing the raw materials for the hives and anticipate being able to produce 200 per month starting this month.

	<b>Year 1 Budget</b>	<b>Year 1 Expenses</b>	<b>% Budget Spent</b>
<b>Staff Costs</b>	\$ 175,950	\$ 125,992	72%
<b>Travel</b>	\$ 24,000	\$ 12,984	54%
<b>Workshops and Training</b>	\$ 56,564	\$ 35,932	64%
<b>Beekeeping &amp; Agricultural Inputs</b>	\$ 178,360	\$ 106,492	60%
<b>Other Direct Costs</b>	\$ 15,300	\$ 21,240	139%
<b>Professional Fees</b>	\$ 12,540	\$ 17,079	136%
<b>TOTAL DIRECT</b>	<b>\$ 462,714</b>	<b>\$ 319,718</b>	<b>69%</b>
<b>Indirect</b>	\$ 46,271	\$ 24,323	53%
<b>TOTAL DIRECT + INDIRECT EXPENSES</b>	<b>\$ 508,985</b>	<b>\$ 344,042</b>	<b>68%</b>
<b>Funding Sources</b>	<b>Commitments</b>	<b>Received</b>	
<b>Ansara Family Fund</b>	\$ 17,800	\$ 17,800	100%
<b>Flora Family Foundation</b>	\$ 36,250	\$ 36,250	100%
<b>Week of Compassion</b>	\$ 200,000	\$ 200,000	100%
<b>Food for the Poor</b>	\$ 100,000	\$ 72,600	73%
<b>Light a Single Candle Foundation</b>	\$ 25,000	\$ 25,000	100%
<b>OIF</b>	\$ 80,000	\$ 70,289	88%
<b>Pcat Board and Individual Donations</b>	\$ 72,000	\$ 74,533	104%
<b>TOTAL REVENUE</b>	<b>\$ 531,050</b>	<b>\$ 496,472</b>	<b>93%</b>

As we transition into FY24, which started on October 1, 2023, we will carryover a total of \$152,430 of funds already raised for this project. In addition, we hope to receive the balance of the commitments made by Food for the Poor and OIF. We have also received new commitments for FY24 which include an additional \$10,000 from the Ansara Family Fund; \$36,250 from the Flora Family Foundation and \$60,000 from a new donor, the Congregation of the Sisters of St. Joseph of Peace, with a focus on the Maternal and Child Health and Nutrition education component that we are adding this year.

In order to fulfill our commitments to you, our donors, and our current 1,108 beneficiaries, we anticipate needing a total of \$225,850 for our beekeeping and agroforestry work, \$66,541 for our maternal and child health and nutrition work. If we expand our beekeeping and agroforestry program into adjacent communities serving an additional 400 beneficiaries, at least 60% of them women, we would need an additional \$129,490.

So far, we have 70% of what we need to fulfill our commitment to you our donors and our current beneficiaries, but to continue to expand our farmers network, we will need to raise an additional \$126,090. If you have an interest in helping us continue to grow our network of empowered women farmers, please let us know and we will provide you with additional information. Having a strong agricultural sector is critical for Haiti, particularly at this time when imports have dropped drastically. Many who see what is going on in Haiti wonder how anyone can accomplish anything in this difficult environment. The Fanm Limye team gets things done. Thank you for believing in them by investing in this project. Please consider continuing to invest in them as they expand their success.

<b>Balance to be Carried over into FY24</b>	\$ -	\$ 152,430	\$ 152,430
<b>New Funds Committed or Received in FY24</b>	\$ -		\$ -
Ansara Family Fund	\$ 10,000		\$ 10,000
Flora Family Foundation	\$ 36,250		\$ 36,250
Food for the Poor	\$ 27,400		\$ 27,400
CSJP	\$ 60,000		\$ 60,000
OIF	\$ 9,711		\$ 9,711
	<b>\$143,361</b>	<b>\$ 152,430</b>	<b>\$ 295,791</b>
<b>FY24 Budget Requirements</b>			
To Complete Beekeeping and Agroforestry Commitments			\$ 225,850
To Implement Maternal & Child Health and Nutrition Commitments			\$ 66,541
To Expand to 400 new Beneficiaries			\$ 129,490
<b>Total to do All of the Above</b>			<b>\$ 421,881</b>
<b>To be Raised</b>			<b>\$ 126,090</b>

## Progress against Workplan

1	Improve the productivity of beekeepers trained in prior years by at least 50%		
1.1	Deliver advanced beekeeping Training to 1,108 graduates of our beekeeping program, at least 60% women.	Two TOTs involving of 71 group leaders (56% women) and PCat's staff from all 8 communes where we operate. Trained group members will replicate the lessons learned through weekly beekeeping meetings at their beekeeping demonstration sites.	Completed
1.2	Distribute at least 808 hives with bee colonies to past graduates.	Identified suppliers of wood and bee colonies located near the beneficiaries. Production began in August. So far, a total of 120 hives have been built and 350 colonies purchased. 32 women had been selected for training to start in October.	We are a little behind on hive construction but anticipate we will produce up to 200 hives per month over the next 4 months.
1.3	Provide extension support to beekeepers in improved hive management skills to enhance honey yields	On average each beekeeping group gets 2 beekeeping training sessions per month, some delivered by peers and some by ag technicians.	On schedule
2	At least 50% of the beekeepers practice one or more agroforestry techniques on their farms.		
2.1	Conduct a Training of Trainers for our extension staff and two leaders from each group (64), at least one woman, in agroforestry practices.	TOT of 71 group leaders during April and May	Completed; 111% of target achieved.
2.2	Train 1,108 graduates of our beekeeping training program in agroforestry techniques for each of 32 beekeeping groups	So far, 40 agroforestry demonstration sites have been established delivering agroforestry demonstrations to each of the 32 beekeeping groups. At least 85% of the beekeepers have received training agroforestry at this point.	85% achieved
2.3	Provide Extension Support to trainees on their farms to assist them in adopting these techniques.	Our extension team provides on-site assistance to demonstration farms and to farmers in their community. Using the monitoring tool developed by our expert consultants, we have found that a total of 85% of beekeepers have adopted two or	On schedule

		more agroforestry practices and 75% three or more. The most popular practices are home farming, live fencing, and contour farming. The groups in Petit Gave, Grand Goave and Leogane are the most enthusiastic; the groups in the communes of Petit Trou and Petites Rivieres in Nippes are less engaged, perhaps because they already received beehives during the last project financed by Catholic Relief Services.	
3	At least 50,000 new trees planted on beekeeper farms.		
3.1	Strengthen existing tree and plant nurseries in targeted communities.	To date, the 40 Agroforestry Demo sites and the 15 existing nurseries have planted 60,000 seedlings.	Slightly behind schedule, but progress will be fast moving forward.
3.2	Expand production of beneficial pollinating trees and plants that can serve as live fencing and wind break, prevent erosion, and produce plant and tree crops for consumption and sale.	The breakdown of the 60,000 seedlings is as follows: 30% Gliricidia/Mombin 15 % citruses 30% moringa 10% mango 10% avocado 5% lemon grass	On schedule
3.3	Distribute trees and plants through beekeeping groups.	To date, 25,000 seedlings have been distributed to the beekeepers.	The remaining 25,000+ will be distributed in October.
3.4	Provide extension support to trainees on their farms on the care of newly planted trees to maximize survival rate.	Extension visits to beekeepers during the next phase will include follow-up on trees planted to make sure they are being watered and are surviving in their new homes.	On schedule
4	Three regional associations of beekeepers exist and are managing an aggregation site where they store, transform and sell their honey and other farm products.		

4.1	Strengthen 32 existing beekeeping groups through refresher training around by-laws, elections, group planning and management.	Mentors conducted an assessment of each beekeeping group. In the process, 21 held elections to refresh their leadership committee in accordance with their bylaws.	Completed
4.2	Assist each group to develop a disaster management and recovery plan.	Not started.	This will be done with the next 6 months.
4.3	Strengthen existing regional association in Nippes through training on business planning and financial management.	The Nippes Association is working on its business plan with help from the Fanm Limye staff. Hope to have a final version by the end of October.	Slightly behind schedule.
4.4	Make an additional investment in productive tools and equipment for the Nippes Aggregation site.	Not yet, dependent upon the business plan.	Slightly behind schedule
4.5	Assist groups in Arcahaie and Cabaret and those in Petit Goave, Grand Goave, and Leogane to explore the pros and cons of developing a regional association; decide whether they want to organize an association; and support them in the creation of an association, if that is what they decide.	Three new groups were created, instead of two, for a total of four across the three regions. The larger geographical area with the most members chose to organize two associations, one for Leogane and another for Petit and Grand Goave. All have drafted their bylaws and filed their paperwork to become legally registered entities.	Completed
4.6	Assist new regional associations to establish an aggregation site to store, transform and sell honey and other farm products.	All three of the new have already signed three-year leases for a property where they will establish their aggregation site.	On schedule
4.7	Each association will develop a business plan	All three associations are working on their business plans with Fanm Limye staff help and we expect a first draft by the end of October.	Slightly behind schedule



4.8	Invest in aggregation site furniture and equipment to store, transform and sell honey and farm products.	Basic furniture has been supplied. Other equipment will be dependent upon their business plan.	Slightly behind schedule
-----	--	--	--------------------------